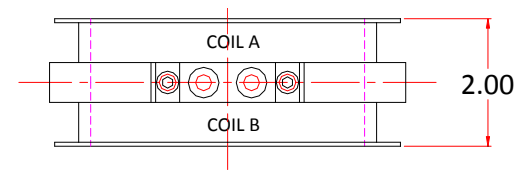


**HC - 2 Dual Helmholtz Coil**

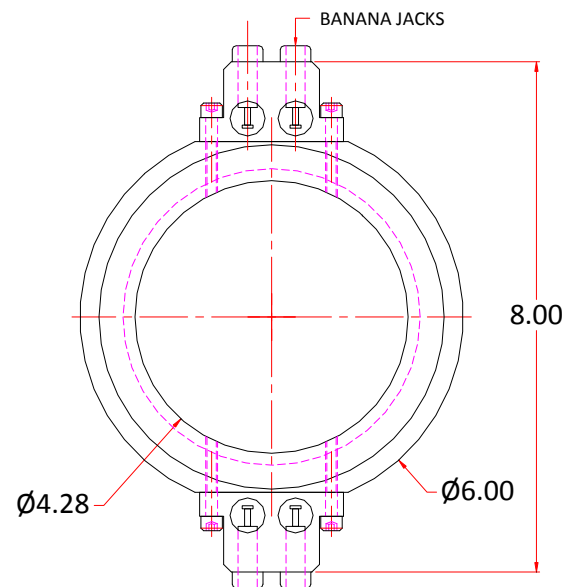
*Designed to fit around a standard 1 liter glass beaker, this dual coil arrangement makes exposing experimental samples to low frequency EM energy or a static magnetic field, a simple matter on the lab bench. Standard 4" Petri dishes also fit inside the inner diameter.*

**Specifications:**

- 77  $\mu$ H of inductance per coil wound with #24 AWG enameled magnet wire.
- 8 Ohms DC per coil.
- 120 kHz. Linear AC bandwidth.



**COIL FORM ASS'Y.**



*Dual coils can provide a static solenoidal magnetic field when connected in series, or a combination of static and dynamic fields when connected seperately to appropriate AC / DC sources.*